



The Savings Calculator for Sustainability Data Preparation

How It Works

See Your Cost Savings

Here's how the GLYNT.AI savings calculator works and the metrics you can expect.

COST SAVINGS & MORE

Sustainability teams often work with semi-automated systems, that take hours of effort to compile data.

This calculator demonstrates the cost savings of an automated sustainability data service.

THE KEY METRICS

The calculator compares the current data system (BEFORE) and the automated system from GLYNT.AI (AFTER)

- Hours of effort
- Cost of effort
- Number of data points
- Data accuracy
- Frequency of data delivery
- Infrastructure cost
- Vendor fees

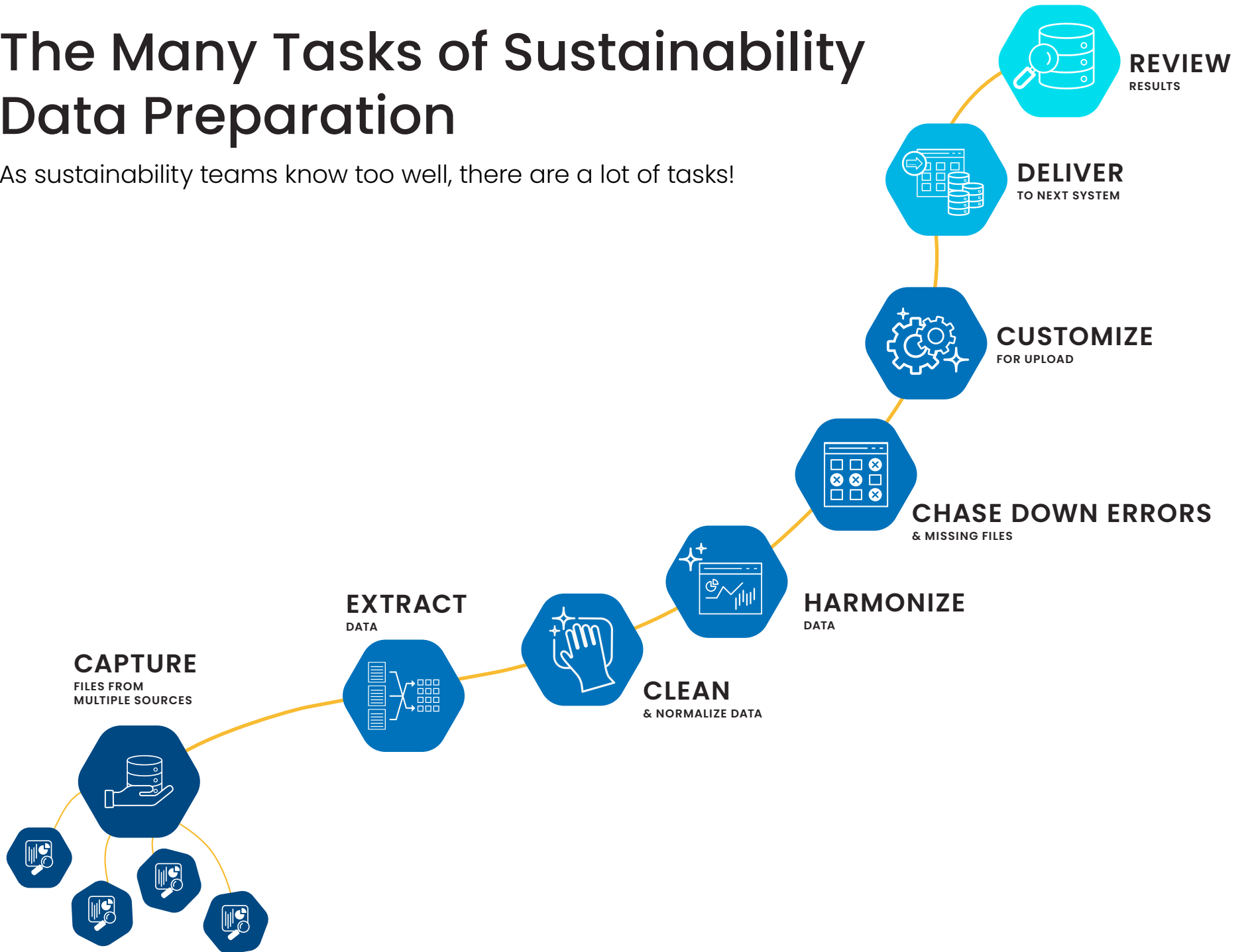
CUSTOMIZED RESULTS

Customers provide three key inputs:

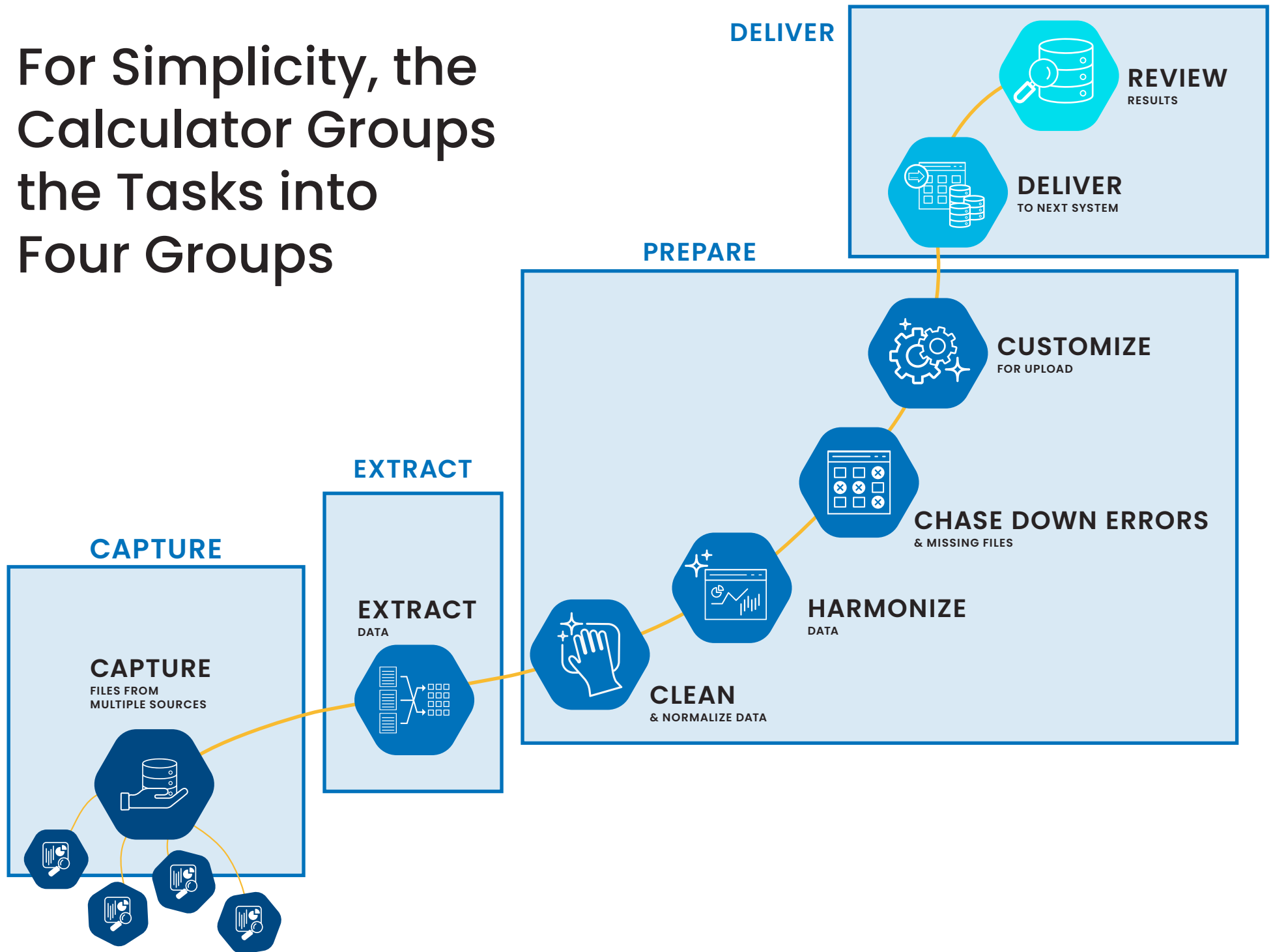
- Number of sites
- Industry
- Types of sustainability data

The Many Tasks of Sustainability Data Preparation

As sustainability teams know too well, there are a lot of tasks!



For Simplicity, the Calculator Groups the Tasks into Four Groups



Global Real Estate Portfolio – Inputs

DATA ITEM	CUSTOMER INPUT VALUE	NOTES
# of Sites	100	<i>Global footprint</i>
Industry	Real Estate	<i>20% of the portfolio changes each year</i>
Types of Sustainability Data	Electricity, Other Energy, Water	<i>The key operational data at each property</i>
Reporting Needs	Scope 1 and 2 Emissions, Environmental	<i>Quarterly updates</i>
Frequency of Data Delivery	Current: Annual New: Monthly	<i>Monthly reviews and approvals</i>

Global Real Estate Portfolio – Results

ANNUAL COSTS & SAVINGS

BEFORE – CURRENT SYSTEM, COST, AND HOURS PER YEAR		
	HOURS	COST
Capture & Transfer of Source Files	652	\$32,600
Extract Data from Source Files	800	\$40,000
Prepare Data	320	\$20,800
Deliver Data	459	\$29,835
Sub-Total	2231	\$123,235
Infrastructure (Security, Privacy, Audit-Ready)		\$49,294
TOTAL COST CURRENT SYSTEM	2231	\$172,529

AFTER – WITH GLYNT.AI, COSTS PER YEAR	
Regular Data Services (# Sites x Data Density Index x \$22 Per Site Per Month)	\$31,680
Data Health & Maintenance (18%)	\$5,702
Audit-Ready Archive & SOC 1 Compliance (Flat Fee)	\$12,000
TOTAL COST GLYNT.AI	\$49,382

ANNUAL SAVINGS WITH GLYNT.AI	
Savings Per Year	\$123,147
Percent Savings Per Year	71%

How the Calculations Are Done

METRIC	METHOD	COMMENT
Hours of Effort	Hours per task per site per month x # of sites	<i>Based on GLYNT.AI experience and industry benchmarks</i>
Cost of Effort	\$ per hour x hours of effort	<i>Fully loaded costs are on the following slide</i>
Number of Data Points	# of fields per month x # sites x 12 months	<i>GLYNT.AI increases the number of data points you'll get from each Source File</i>
Data Accuracy	(1 - error rate) x number of fields per month	<i>Industry averages, GLYNT.AI performance metrics</i>
Frequency of Data Delivery	Weekly, monthly, quarterly or annual reporting	<i>Most GLYNT.AI customers are moving to weekly or monthly data updates</i>
Infrastructure Cost	Cost of IT systems: privacy, security, audit-ready	<i>Based on GLYNT.AI experience and industry benchmarks</i>
Vendor Fees	The cost of automated data services	<i>GLYNT.AI market intelligence</i>

Summary

KPI	BEFORE CURRENT SYSTEM	AFTER WITH GLYNT.AI	RESULT
Annual Cost	\$172K	\$49K	72% cost savings
Staff Hours	2231	240	90% hours reduction
Number of Data Points (100 Sites)	30K	280K	9X more data from same files
Accuracy Rate	85%	99.5%	17% increase in accuracy
Number of Errors to Find and Correct (100 Sites)	4500	150	30X fewer errors

Calculation Details

Data Density Index by Industry

These are the typical values for the GLYNT.AI Data Density Index by industry. The index is customized as needed.

DATA DENSITY BY INDUSTRY

INDUSTRY	% COMPLEX SITES	DATA DENSITY INDEX
Automotive	30%	1.34
Energy	50%	1.67
Hospitality	25%	1.24
Manufacturing	40%	1.50
Real Estate	20%	1.17
Services	10%	1.00



The Data Density Index is Customized

SAMPLE CUSTOMER INPUTS

Number of Sites	<input type="text" value="100"/>		
Industry (select one, if unknown select Real Estate)		Data Services (select all that apply)	
Automotive	<input type="checkbox"/>	Electricity	<input checked="" type="checkbox"/>
Energy	<input type="checkbox"/>	Other Energy	<input checked="" type="checkbox"/>
Hospitality	<input type="checkbox"/>	Water	<input checked="" type="checkbox"/>
Manufacturing	<input type="checkbox"/>	Waste	<input type="checkbox"/>
Real Estate	<input checked="" type="checkbox"/>	Scope 1	<input type="checkbox"/>
Services	<input type="checkbox"/>	Scope 2	<input type="checkbox"/>
		Scope 3	<input type="checkbox"/>
Data Density Index:	<input type="text" value="1.17"/>		

The data density is calculated by GLYNT.AI and varies by industry. For example, manufacturing has more vendor accounts at each site and more meters per account, so a higher Data Density Index. Data density per site also increases with the number of data services selected. Waste data is data-intensive.

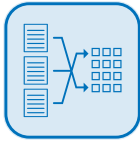
The Savings Calculator uses the Data Density Index is used to adjust hours of effort in the current system, and fees of the new automated system.



Capture of Source Files

Customers typically use one or more of these methods to capture invoices, utility bills and other files (the ‘Source Files’) and transfer them to internal systems for processing. The Savings Calculator uses a weighted average of the costs, based on the mix of methods used by the customer. GLYNT.AI can automate each method.

	UTILITY SITE LOGIN	UPLOADS BY SITE	SFTP TRANSFER (POST-PAYMENT)	AP/ERP INTEGRATIONS	AP (PRE-PAYMENT)
Description	Direct capture of source files & transfer from utility site	The site staff uploads the required files each month	Customer pulls Source Files from business systems and transfers them to a SFTP	Direct integration with key business systems for automated Source File delivery	Direct integration with AP, includes processing of files as they come in for payments
Cost Components	<ul style="list-style-type: none"> • Vendor fees • Time to manage credentials • Infrastructure to manage service 	<ul style="list-style-type: none"> • Site staff & management time • Data QA by HQ team • Hours to chase missing files by HQ 	<ul style="list-style-type: none"> • Initial setup time • Cost to maintain (if not automated) 	<ul style="list-style-type: none"> • Initial setup 	<ul style="list-style-type: none"> • Initial setup • Daily file and data delivery
Cost Considerations	Hours of effort to maintain service and extensive data QA is required. Utility logins are a partial solution, which increases costs	Hours of effort by the site teams, and constant training required due to staff turnover. Significant hours for HQ team to chase missing files and bad data	Fairly efficient once set up, and is often preferred by IT teams for security & privacy reasons	Efficient once set up, especially for high data volumes	Enhances AP automation, saving time and money that more than pays for sustainability data services
Cost Summary	\$\$\$\$	\$\$\$	\$\$	\$	<\$0



Extract Data from Source Files

Once the Source Files are secured, customers must get the data from the PDFs, spreadsheets and other reports. This is known as Extraction.

	MANUAL DATA ENTRY WITH DATA CHECKS	OCR/POWER BI TEMPLATES	UTILITY BILL DATA SERVICES	AI (LLMS OR CLOUD TOOLS)
Description	Staff hand keys data into spreadsheets or software, additional staff does data QA	Templates by vendor set up in Power BI or similar system to leverage OCR	Vendors that extract data from utility bills	Developers integrate AI tools to deliver data from pdfs, spreadsheets and other file formats
Cost Components	<ul style="list-style-type: none"> Hours of effort HQ staff time for data QA 	<ul style="list-style-type: none"> Software licenses Hours of effort to build and maintain 	<ul style="list-style-type: none"> Platform fee Per bill fee Staff time to manage the service 	<ul style="list-style-type: none"> Developer hours Software infrastructure Hours for research, experimentation & iteration
Cost Considerations	85% typical accuracy rate Initial data entry seems efficient, but costs rise sharply because of higher rates. Data QA job is never done	85% typical accuracy rate Templates are brittle and break as Source Files change. Need constant maintenance	90% typical accuracy rate Partial solution, does not work at every site nor for every vendor. Costs rise when managing multiple data vendors.	Relies on availability of developers. A difficult task due to huge file variety. Also LLMs are expensive to use and emissions-heavy
Cost Summary	\$\$\$	\$\$	\$\$	\$\$\$\$



Prepare Unified Sustainability Data

Extracted data is not ready to use. It must be cleaned, aggregated and harmonized into a structured format.

	CLEAN, AGGREGATE & HARMONIZE DATA VIA SPREADSHEETS	CLEAN, AGGREGATE & HARMONIZE DATA VIA SUSTAINABILITY SOFTWARE	UTILITY BILL DATA SERVICES
Description	Senior staff merges spreadsheets, and checks data for errors and outliers	Load spreadsheet (CSV) into software, find errors and overwrite (no different than process to the left)	Vendors that extract data from utility bills, typically includes file capture from the utility site
Cost Components	<ul style="list-style-type: none">Hours of effort by HQ staff with subject matter expertise	<ul style="list-style-type: none">Software licensesHours of effort by HQ staff with subject matter expertise	<ul style="list-style-type: none">Platform feePer bill feeStaff time to manage the service
Cost Considerations	Barely doable with limited data sets as there are 1000s of errors to discover and fix	Software more easily visualizes outliers, but fixing is a very fragmented, undocumented process	Included in the file capture solution. Customers get data in a standard format. Notorious for low data quality
Cost Summary	\$\$\$	\$\$\$	\$\$



Deliver & Load Prepared Data to Next System

With clean, harmonized data in hand, attention turns to preparing the data with customized fields and formats, making it ready to use in other software or in corporate reporting.

	CUSTOMIZE & FORMAT DATA IN SPREADSHEETS	CUSTOMIZE & FORMAT DATA FOR SOFTWARE	UTILITY BILL DATA SERVICES
Description	Must manipulate and transform prepared data into customized formats before using spreadsheet for reporting	Must manipulate and transform prepared data into customized formats before loading into software	Vendors that extract data from utility bills
Cost Components	<ul style="list-style-type: none"> Hours of effort to transform and prepare Double-checking work is 2X the expense 	<ul style="list-style-type: none"> Software licenses Hours of effort to transform and prepare Double-checking work is 2X the expense 	<ul style="list-style-type: none"> Platform fee Per bill fee Staff time to manage the service
Cost Considerations	Requires special expertise and know-how, and unless coded, hours are repeated each month	Requires special expertise and know-how, and unless coded, hours are repeated each month	Not set up to customize data, so user must do this task on spreadsheets or in other software
Cost Summary	\$\$\$	\$\$\$	\$\$\$

Other Default Input Values

FULLY-LOADED COST PER YEAR

Data Entry	\$48,000
Data QA	\$90,000
Sustainability Manager	\$175,500
IT/Developer	\$201,500

NUMBER OF FIELDS PER SITE PER MONTH

Before (10 fields per data type)	25.2
After (65 fields per data type)	234

ACCURACY RATES

Manual Data Entry	85%
OCR + Templates	85%
Utility Data Services	95%
GLYNT.AI	99.5%

OF ERRORS PER YEAR PER SITE

Manual Data Entry	35.1
OCR + Templates	35.1
Utility Data Services	11.7
GLYNT.AI	1.17

OF DATA POINTS & ERRORS PER YEAR, 100 SITES

Before (current system)

Number of Data Points	30,240
Number of Errors	4536

After (with GLYNT.AI)

Number of Data Points	280,800
Number of Errors	1404

COST OF DATA SECURITY, PRIVACY AND AUDIT COMPLIANCE

Additional Cost, Current Systems (assumption)	40%
Additional Cost, GLYNT.AI (included)	0%

Note: Costs are \$250,000–\$800,000 per year for enterprise companies

(Source: EU and US SEC)

ABOUT GLYNT.AI

GLYNT.AI is the market leader for **finance-grade sustainability data**. While standard reporting systems takes months, our proprietary AI delivers data on energy, water, waste, and emissions in days.

GLYNT.AI replaces manual entry and scattered technical support with a complete system that extracts and unifies data from complex source files — in varied languages and formats — into structured, audit-ready data. With **99.5% accuracy, 9X more data coverage, a 5-month payback period, and 95% fewer emissions** than LLMs, GLYNT.AI delivers superior business performance.



GET IN TOUCH